



User's manual DM222/DM222-2

Safe & Sound® Digital Audio Monitor



Congratulations

on purchasing your new VTech product. Before using this product, please read **Important safety instructions**.

For support, shopping, and everything new at VTech, visit our website at www.vtechphones.com.

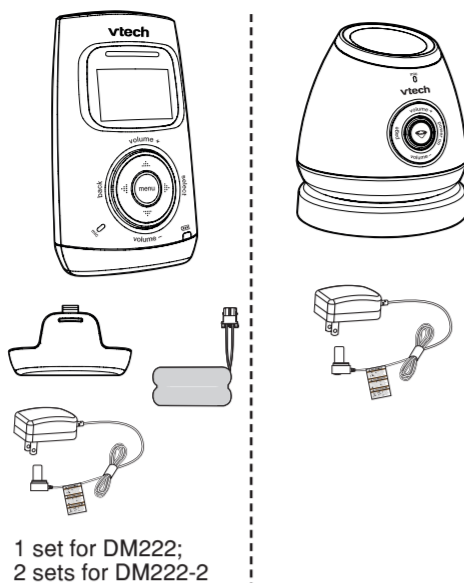
Register online to get an additional 3-month warranty!

Visit www.vtechphones.com.

Registration
Register your product online for enhanced warranty support.

Product news
Learn about the latest VTech products.

What's in the box



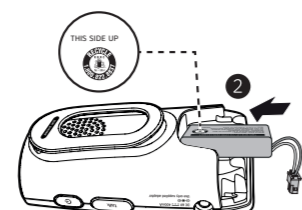
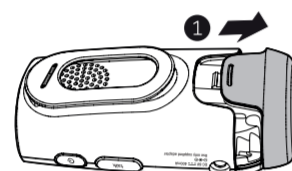
1 set for DM222;
2 sets for DM222-2

Install the battery

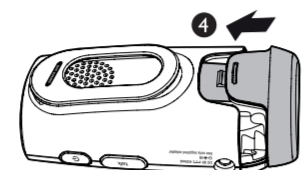
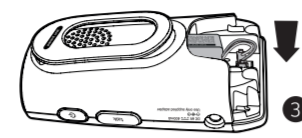
You can power up the parent unit by connecting it to AC power or to the rechargeable battery provided. Even if the parent unit is connected to AC power, we recommend you also install the battery. This guarantees continual operation in case of a power outage.

NOTE
• Use only the battery supplied with this product.

Install the battery as shown below.



NOTE
• Make sure the supplied rechargeable battery with the label **THIS SIDE UP** facing up.

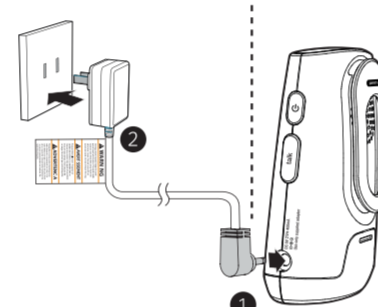
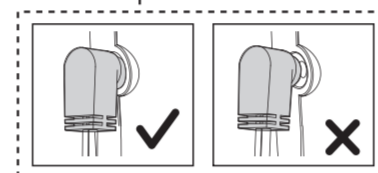
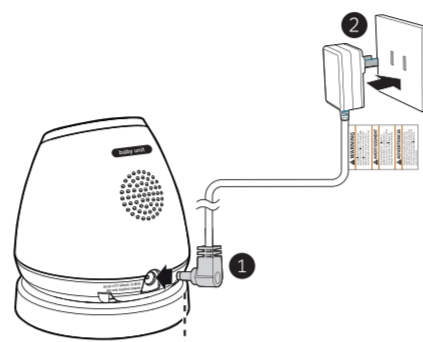


Connect and charge the battery

NOTES

- Use only the parent unit power adapter or the baby unit power adapter supplied with this product.
- Make sure the electrical outlets are not controlled by wall switches.
- The parent unit power adapter and baby unit power adapter are intended to be correctly oriented in a vertical or floor mount position. The prongs are not designed to hold the plug in place if it is plugged into a ceiling, under-the-table or cabinet outlet.
- Make sure the parent unit, the baby unit and the power adapter cord are out of reach of children.

Connect the baby monitor



Charge the parent unit battery

Once you have connected the parent unit and installed its battery, it powers on automatically. The battery icon indicates the battery status (see the following table).

NOTES

- The parent unit battery is fully charged after 11 hours of continuous charging.
- It takes longer to charge the battery when the parent unit is turned on. To shorten the charging time, turn the parent unit off while charging.
- The standby time varies depending on the sensitivity level you set, your actual use and the age of the battery.

Battery indicators	Battery status	Action
The battery icon is off.	No battery is installed. The parent unit can be used only when it is connected to AC power.	Install the parent unit battery. Charge without interruption (at least 30 minutes).
LOW BATTERY and flash on the screen. The light flashes.	The battery has very little charge and may be used for only a short time.	Charge without interruption (about 30 minutes).
The battery icon becomes solid .	The battery is fully charged.	To keep the battery charged, connect it to AC power when not in use.

Before use

NOTE

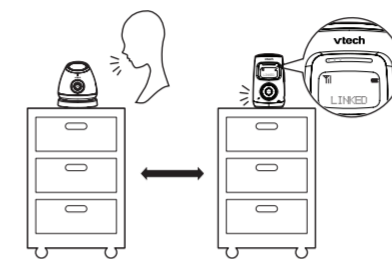
- This baby monitor is intended as an aid. It is not a substitute for proper adult supervision, and should not be used as such.

You may test the baby monitor before initial use, and at regular times thereafter.

Place the parent unit and the baby unit in the same room to test the product.

Test your audio monitor

- Speak towards the microphone of the baby unit. You will hear the sound at the parent unit, and see the visual sound indicators light up.

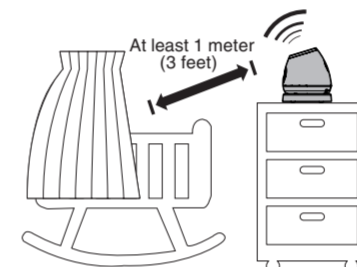


Positioning the baby monitor

CAUTION

- Keep the baby unit out of the reach of the baby. Never place or mount the baby unit inside the baby's crib or playpen.
- Do not expose the baby unit to extreme heat or direct sunlight.

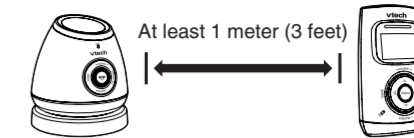
1. Place the baby unit at least 1 meter / 3 feet away from your baby.



NOTE

- If you experience audio feedback on either the parent unit or baby unit, move the parent unit further away until there is no more audio feedback; or press **volume -** on the parent unit to lower the audio feedback sound.

2. Place the parent unit at least 1 meter / 3 feet away from the baby unit.



TIP

- Increase the speaker volume of the parent unit if you cannot hear the sounds transmitted from the baby unit.
- 3. Press on the baby unit to turn on the projector. It projects some colorful images to the environment. Adjust the angle of the baby unit so that the images are clearly projected to the ceiling or a wall.

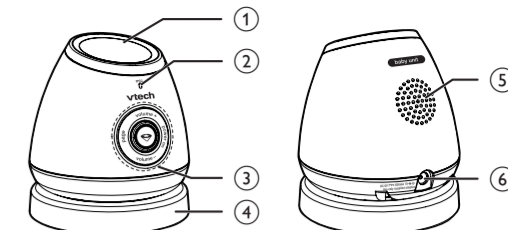


Operating range

The operating range of the baby monitor is up to 300 meters (1,000 feet) outdoors or 50 meters (160 feet) indoors. The actual operating range may vary depending on the environmental conditions, and other interferences such as walls, doors, and other obstructions.

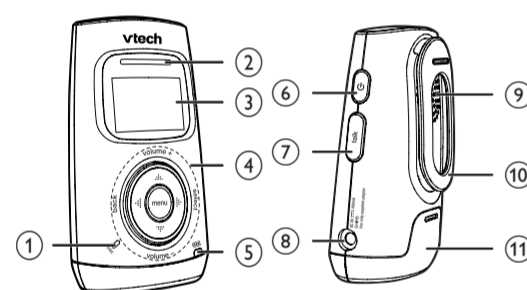
Overview

Baby unit overview



1	Projector • When it is on, it projects some image patterns to the user environment.
2	Microphone
3	Control key panel power on • Press to power on. • Press and hold to power off. page • Press to start or stop paging parent unit. volume + • Press to increase the listening volume or lullaby volume. volume - • Press to decrease the listening volume or lullaby volume. • Press to turn on or off the projector and lullaby.
4	Magnetic base
5	Speaker
6	Power jack

Parent unit overview



1	Microphone
2	Visual sound indicator The visual sound indicator has two functions. One is to show the sound level detected by the baby unit. The other one is to show the volume level during speaker volume setting. Sound level detected by the baby unit • One to three green lights indicate a moderate sound level detected by the baby unit. • Additional red lights indicate a higher sound level detected by the baby unit (e.g. baby crying loudly). Speaker volume level • One to three green lights indicate Level 1 to Level 3 of the speaker volume setting. • Additional red lights indicate Level 4 to Level 5 of the speaker volume setting.
3	LCD panel
4	Control key panel menu • Press to enter the menu while idle. select • While in a menu, press to choose an item, or save a setting. back • While in a menu, press to return to the previous screen. • Press to return to idle screen. volume + • Press to increase the speaker volume. • While in a menu, press to scroll up. volume - • Press to decrease the speaker volume. • While in a menu, press to scroll down.
5	Battery level indicator • Light on when the parent unit battery is being charged. • Light flashes when the parent unit battery is low and needs charging. • Light off when the parent unit battery is fully charged, or when no battery is installed.
6	(On/off) • Press to power on. • Press and hold to power off. • Press to return to idle screen when the parent unit is in use.
7	talk • Press and hold to talk to the baby unit; release to stop talking. • While in a menu, press to return to idle screen.
8	Power jack
9	Speaker
10	Belt clip
11	Battery compartment cover

Parent unit display icons

	Connection status • displays when strong signal strength is detected between the baby unit and the parent unit. • displays when moderate signal strength is detected between the baby unit and the parent unit. • displays when the weak link signal strength is detected between the baby unit and the parent unit. • flashes when the link between the baby unit and the parent unit is lost.
	Projector • Displays when the projector of the baby unit is on.
	Sound alert • Displays when the sound alert of the parent unit is turned on. • Flashes when there are sounds detected from the baby unit and the parent unit is in mute.
	Vibration alert • Displays when the vibration alert of the parent unit is turned on. • Flashes when there are loud sounds detected from the baby unit.
	Mute • Displays when the volume is turned off.
	Battery status • animates when the battery is charging. • displays solid when the battery is fully charged. • displays when battery is in low level and needs charging. • No battery icon displays when there is no battery installed.

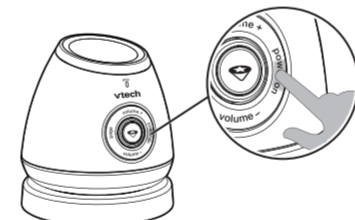
Parent unit display screen messages

LINKED	When the link between the parent unit and the baby unit is established.
LOW BATTERY	The parent unit uses only the rechargeable battery pack and it needs to be recharged.
NOT LINKED	When the link between the parent unit and the baby unit is lost continuously for over 10 seconds.
PAGING	All idle parent units are being paged by the baby unit.
SAVED	Your selection has been saved.
SEARCHING	The parent unit is out of range of the baby unit, or the baby unit is out of power.
TALK	The parent unit is talking to the baby unit.
TALKBACK	The other parent unit is talking to the baby unit.

Using the baby monitor

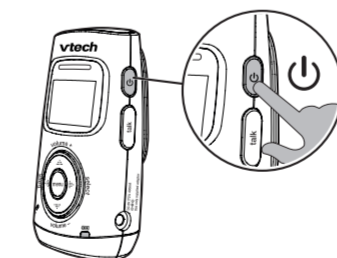
Power on or off the baby unit

- Press **power on** to turn on the baby unit. The **power on** lights up.
- Press and hold **power on** again to power off the baby unit. The **power on** turns off.



Power on or off the parent unit

- Press to power on the parent unit. The screen turns on.
- Press and hold again to power off the parent unit. The screen turns off.



NOTE

- The parent unit powers on automatically once it is connected to AC power or battery installed. The baby unit also powers on automatically once connected to AC power.

Adjust the speaker volume for baby unit

- Press **volume +** or **volume -** on the baby unit at any time.

Adjust the speaker volume for parent unit

- You can adjust the speaker volume from **VOLUME 1** to **VOLUME 5**, or turn it off. The speaker volume is preset to **VOLUME 3**.
- Press **volume +** or **volume -** when the parent unit is not in use.

When the speaker volume is set to off, the screen displays .

Adjust the sound sensitivity of the baby unit

You can choose to hear sounds from the baby unit all the time, or to hear sounds that exceed a certain level. You can use the parent unit to adjust the microphone sensitivity of your baby unit. The higher the sensitivity level, the more sensitive the baby unit is in detecting sounds for transmitting to the parent unit. The sound sensitivity is preset to **LEVEL 5**.

Sound sensitivity table for reference

Display	Sensitivity	Description
Level 5	High sensitivity	High sensitivity level The parent unit speaker is constantly on, and you will hear all sounds (including background noises) from your baby's room.
Level 4	Medium high sensitivity level	The parent unit speaker turns on for soft babbling and louder sounds from your baby. It remains quiet when your baby sleeps soundly.
Level 3	Medium sensitivity level	The parent unit speaker turns on for loud babbling and louder sounds from your baby. It remains quiet when your baby makes soft sounds.
Level 2	Medium low sensitivity level	The parent unit speaker turns on for crying and louder sounds from your baby. It remains quiet when your baby makes soft sounds.
Level 1	Low sensitivity level	The parent unit speaker turns on for loud crying or screaming sounds from your baby. It remains quiet when your baby makes soft sounds.

1. Press **menu** when the parent unit is not in use.
2. Press **select**.
3. Press **volume +** or **volume -** to choose the sensitivity level.
4. Press **select** to confirm your selection.

NOTE

- To enter the sensitivity menu of the parent unit, the baby unit must be turned on.

Sound alert

Sound alert feature works only when the parent unit is in mute. If you turn on the sound alert, the parent unit beeps when the baby unit detects sounds which light up four sound level indicators on the parent unit.

When the sound alert of the parent unit is turned on, displays. The sound alert is preset to **OFF**.

1. Press **menu** when the parent unit is not in use.
2. Press **volume +** or **volume -** to choose **SOUND ALERT**, then press **select**.
3. Press **volume +** or **volume -** to choose **ON** or **OFF**.
4. Press **select** to confirm your selection. The screen displays **SAVED** and you hear a confirmation tone.

NOTE

- The sound alert setting on each parent unit is independent.

Vibration alert

You can turn on the vibration alert so that the parent unit vibrates when the baby unit detects sounds which light up four sound level indicators on the parent unit.

When the vibration alert of the parent unit is turned on, displays. The vibration alert is preset to **OFF**.

1. Press **menu** when the parent unit is not in use.
2. Press **volume +** or **volume -** to choose **VIBE ALERT**, then press **select**.
3. Press **volume +** or **volume -** to choose **ON** or **OFF**.
4. Press **select** to confirm your selection. The screen displays **SAVED** and you hear a confirmation tone.

NOTES

- Each time you set the vibration alert to **ON**, the parent unit vibrates briefly after you press **select**.
- We recommend you not to turn on the vibration alert and the lullaby at the same time, as the lullaby will trigger the vibration alert frequently.
- The vibration alert setting on each parent unit is independent.

Language

You can select a language (English, French or Spanish) to be used in all screen displays. The language is preset to **English**.

1. Press **menu** when the parent unit is not in use.
2. Press **volume +** or **volume -** to choose **LANGUAGE**, then press **select**.
3. Press **volume +** or **volume -** to choose **ENGLISH, FRANCAIS** or **ESPAÑOL**.
4. Press **select** to confirm your selection. The screen displays **SAVED** and you hear a confirmation tone.

NOTE

- The language setting on each parent unit is independent.

Set default

Use this feature to restore to the default settings. Restoring the default settings on one parent unit will also reset the shared settings for sensitivity of the other parent unit.

1. Press **menu** when the parent unit is not in use.
2. Press **volume +** or **volume -** to choose **SET DEFAULT**, then press **select**.
3. Press **volume +** or **volume -** to choose **YES** or **NO**.
4. When you choose **YES**, press **select** to confirm your selection. You hear a confirmation tone and then the screen displays **LINKED**.

-OR-

When you choose **NO**, press **select** to confirm your selection. The screen displays the previous menu.

